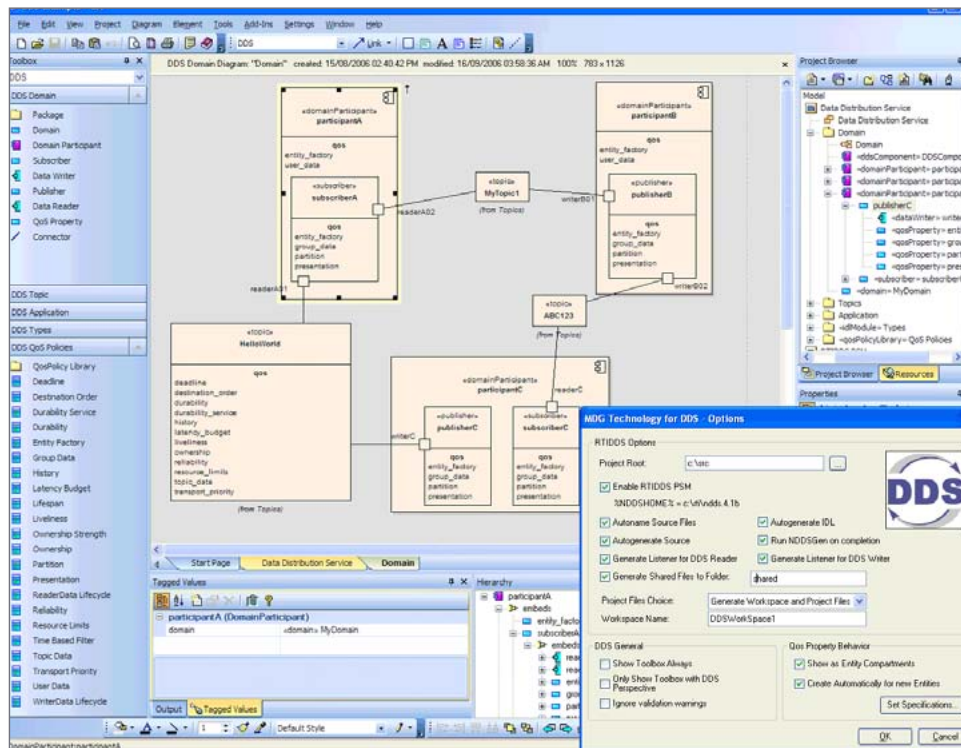


DDS™

Design complex publish-subscribe data services for real-time and embedded applications using Enterprise Architect.



Sparx Systems Enterprise Architect supports modeling complex, data-centric publish-subscribe services for OpenSplice and RTI DDS applications using UML 2.5.

With advanced modeling capabilities, low cost and a wealth of innovative features, Enterprise Architect and MDG Technology for DDS is the premier team-based design environment for creating DDS applications.



Instantly Create your
Global Data Space

Data Distribution Services

Design real-time data distribution services for OpenSplice and RTI DDS using UML today!

Create, Edit and Integrate Data-Centric Publish-Subscribe Services using UML 2.5 and the UML Profile for DDS. Specify Quality of Service policies to govern reliability and resource limits.

Link Topic Data to Reconstruction Classes for optimum data access. Use Data Local Reconstruction to unify DDS data from multiple topics to create integration-ready APIs for user applications.

Generate Integration-Ready, Executable Source Code for heterogeneous DDS applications. Use Model Driven Architecture to produce C, C++, C# or Java source code for both the OpenSplice and RTI DDS platforms using MDA Transformation.

Extensible UML 2.5 Modeling

Use UML 2.5's extensibility to capture and share DDS designs with other UML software designs, BPMN business processes and SysML system models.

Create rigorous, valid DDS designs

Take advantage of support for model validation to ensure the correctness of DDS design models.

Features:

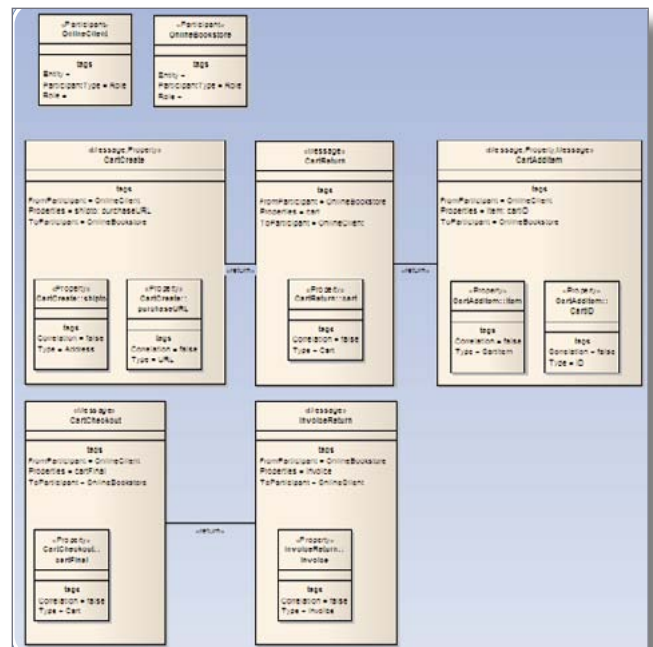
- Specify Data-Centric Publishers, Subscribers, Topics and QoS Policies
- Define Data Local Reconstruction mappings for effective DDS data access
- Create heterogeneous DDS applications across different host environments
- Generate executable source code in C, C++, C# and Java using MDA (Model Driven Architecture)
- Target DDS implementations for the RTI and OpenSplice platforms

OpenSplice | **DDS**

Sparx Systems:
DDS Solution Provider and
Technical Partner with
PrismTech



Sparx Systems:
DDS Solution Provider
and Technical Partner
with RTI



Instantly create your
Global Data Space

All product names are owned by their respective owners